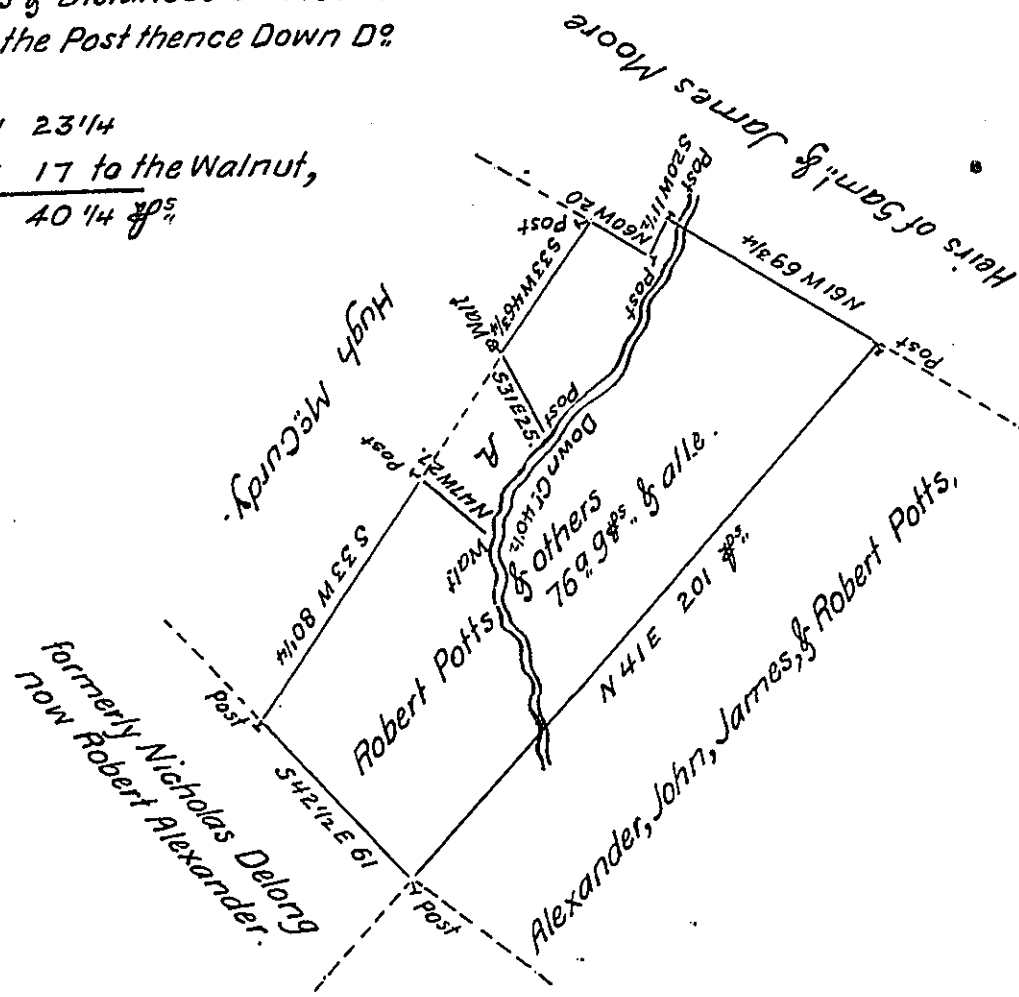


Courses & Distances on Creek.
 Beg. at the Post thence Down D?

S 53 W 23' 14"
 S 13 E 17 to the Walnut,
 40 1/4 70 5"



A Draft of a Tract of Land in Fannett Township in the County of Franklin containing seventy six Acres 9 Perches & allowance the piece marked A containing 4 Acres 31 Perches was formerly included in the above Draft and returned in dispute between Alexander, John, James, & Robert Potts on their Warrant Dated 17th September 1784. and Hugh M^cGurdy. At a meeting of the Board of Property the 1st August 1791 the above 4⁹ & 31 ⁷⁰/₁₆ was confirmed to said M^cGurdy and the late Matt^m Henderson D.S. directed to make and return the survey agreeable to the Judgement of the Board Survey^d 20th August 1791.

Dan^l Henderson D.S.

To Daniel Broadhead Esquire
 Surveyor General.

IN TESTIMONY that the above is a copy of the original remaining on file in the Department of Internal Affairs of Pennsylvania, made conformably to an Act of Assembly approved the 16th day of February, 1833, I have hereunto set my Hand and caused the Seal of said Department to be affixed at Harrisburg, this twenty-seventh day of February 1908

Henry Hauck
 Secretary of Internal Affairs.